

# Photometric Report

MAC Aura XIP Softlens – Wide

MARTIN PROFESSIONAL R&D OPTICAL LABORATORY

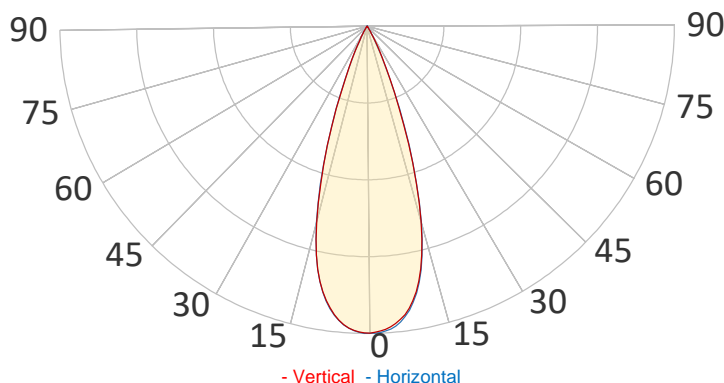
## GENERAL SPECIFICATIONS

Total Fixture Output:	5500 lm
Light Engine Output:	11klm
Efficacy:	21 lm/W
Lens Option:	Softlens
Beam Angle (50%):	6,9-35,1°
Field Angle (10%):	11,8-51,0°
Cut-off Angle (3%):	14,9-60,6°
CRI:	73
CQS:	83
TM-30 Rf:	79
TM-30 Rg:	116
TLCI:	60
Color Temperature:	6500 K



## SAMPLE MEASUREMENT

POLAR PLOT

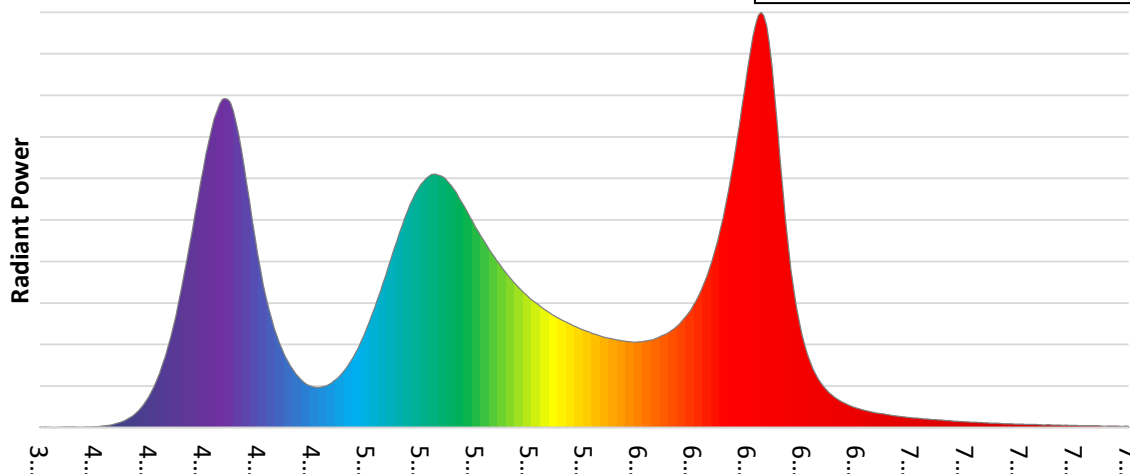


Catalog Number:	MAR-90250100HU
Measured Output:	5418 lm
Measured Peak:	16412 cd
Consumed Power:	282 W
Efficacy:	19,2 lm/W

Beam Angle (50%):	35,1°
Field Angle (10%):	51°
Cut-off Angle (3%):	60,6°

Measurement Condition:	
Ambient Temperature:	25° +/- 5° C
AC Supply:	230V/50Hz
Fan Mode:	Constant Fan Full
Fixture Warm-up Time:	30 minutes

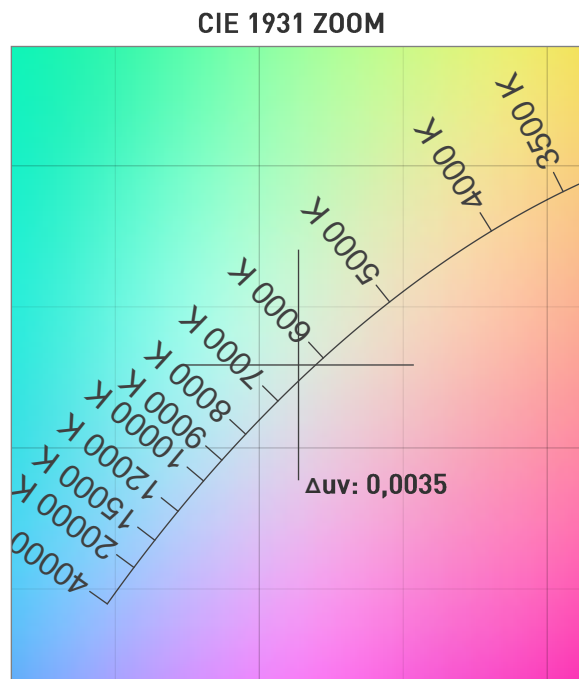
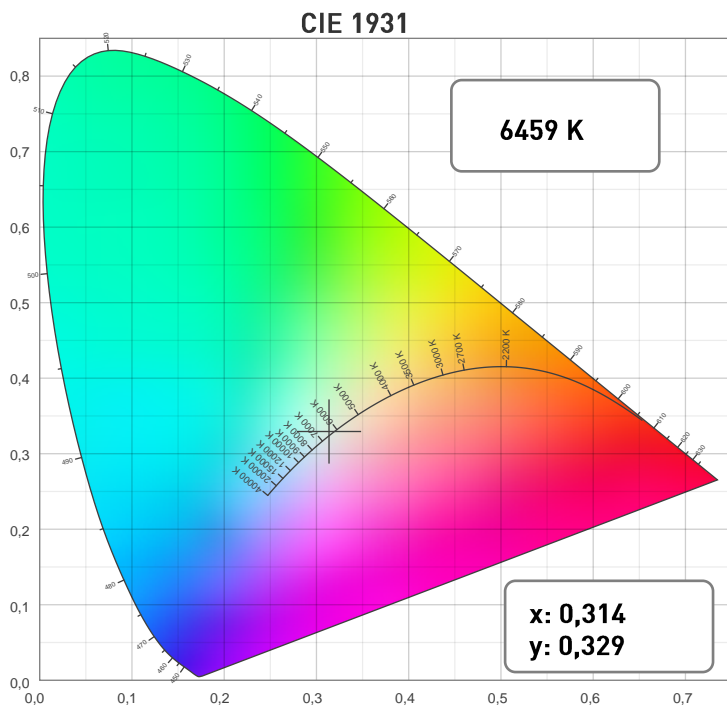
SPECTRAL DISTRIBUTION



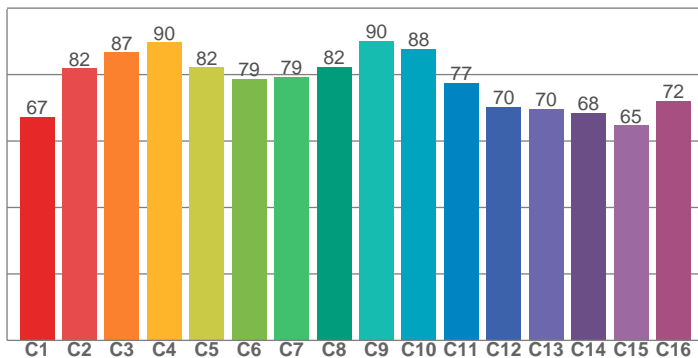
# Photometric Report

MAC Aura XIP Softlens – Wide

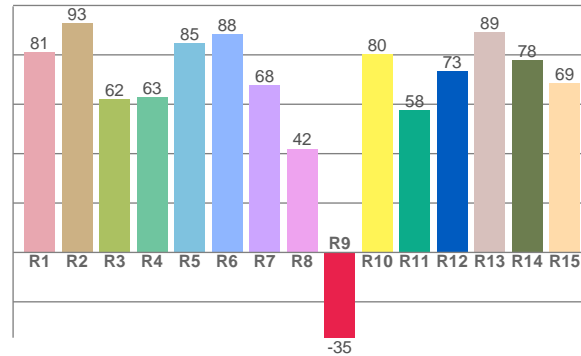
## CHROMATICITY



TM30: 79,1



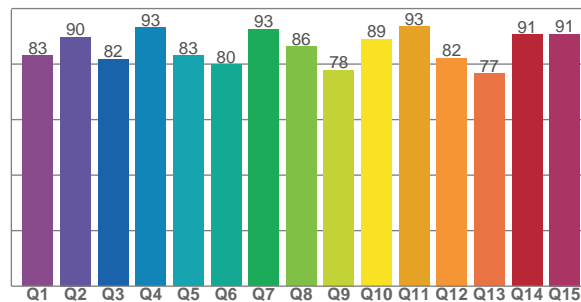
CRI: 72,7 (R1-R8)



## COLOR PARAMETERS

Color Temperature	Color Rendering Index	Red Component	Color Fidelity	Color Gamut
CCT	CRI	CRI R9	TM30 Rf	TM30 Rg
6459 K	72,7	-34,5	79,1	115,6

CQS: 84,9



Television Lighting Consistency Index	Color Quality Scale	Color Coordinate CIE 1931	Color Coordinate CIE 1931	Color Coordinate CIE 1964	Color Coordinate CIE 1964	Color Deviation from Black Body
TLCI	CQS	x	y	u	v	$\Delta uv$
60	84,9	0,314	0,329	0,198	0,312	0,0035

# Photometric Report

MAC Aura XIP Softlens – Wide

TM30

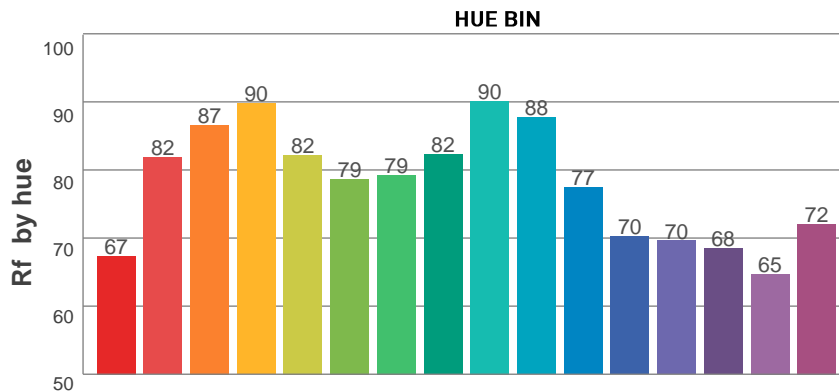
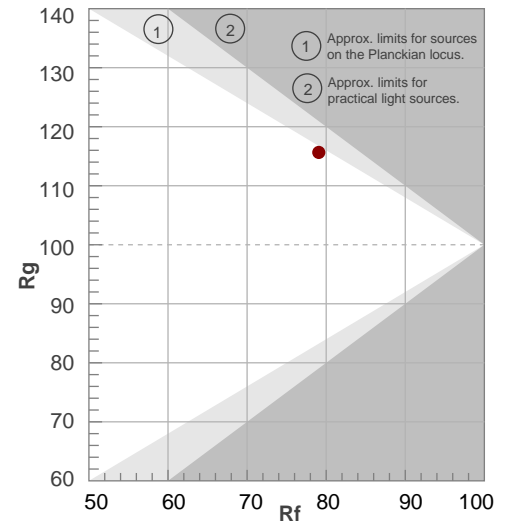
Rf 79,1

Fidelity index Rf

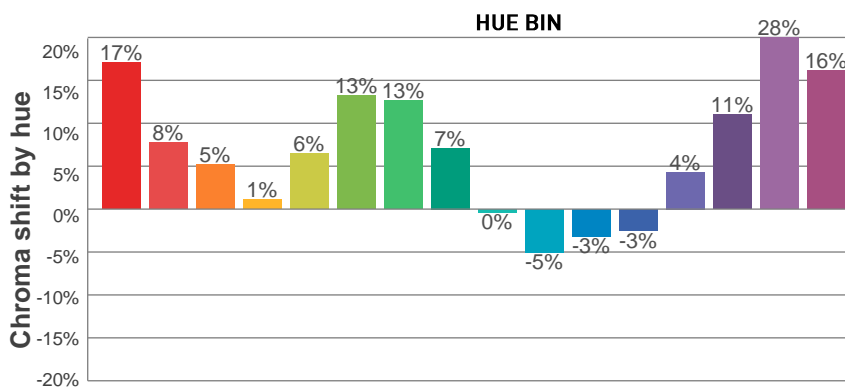
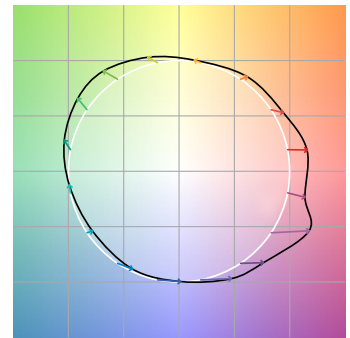
Rg 115,6

Gamut index Rg

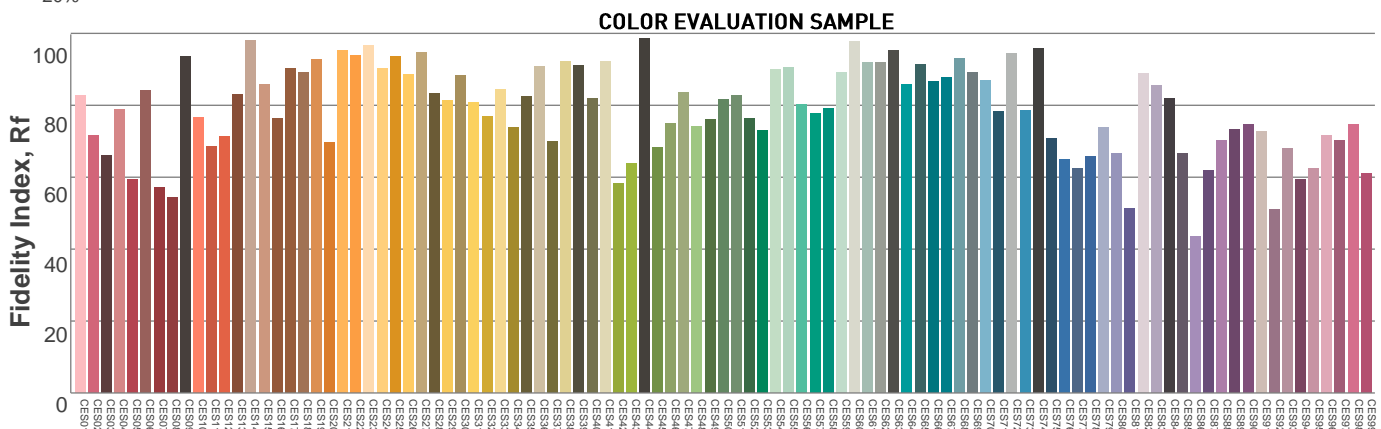
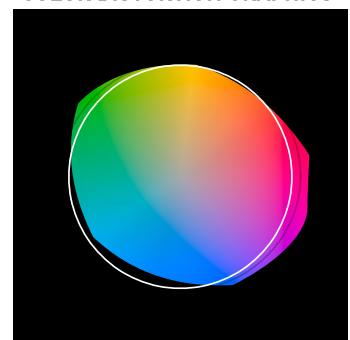
Hue Bin	R <sub>f</sub>	Graphic shifts (%)	
		Chroma	Hue
1	67	17%	-4%
2	82	8%	-8%
3	87	5%	-4%
4	90	1%	6%
5	82	6%	7%
6	79	13%	6%
7	79	13%	-4%
8	82	7%	-7%
9	90	0%	-7%
10	88	-5%	1%
11	77	-3%	14%
12	70	-3%	21%
13	70	4%	27%
14	68	11%	17%
15	65	28%	21%
16	72	16%	-1%



COLOR VECTOR GRAPHICS



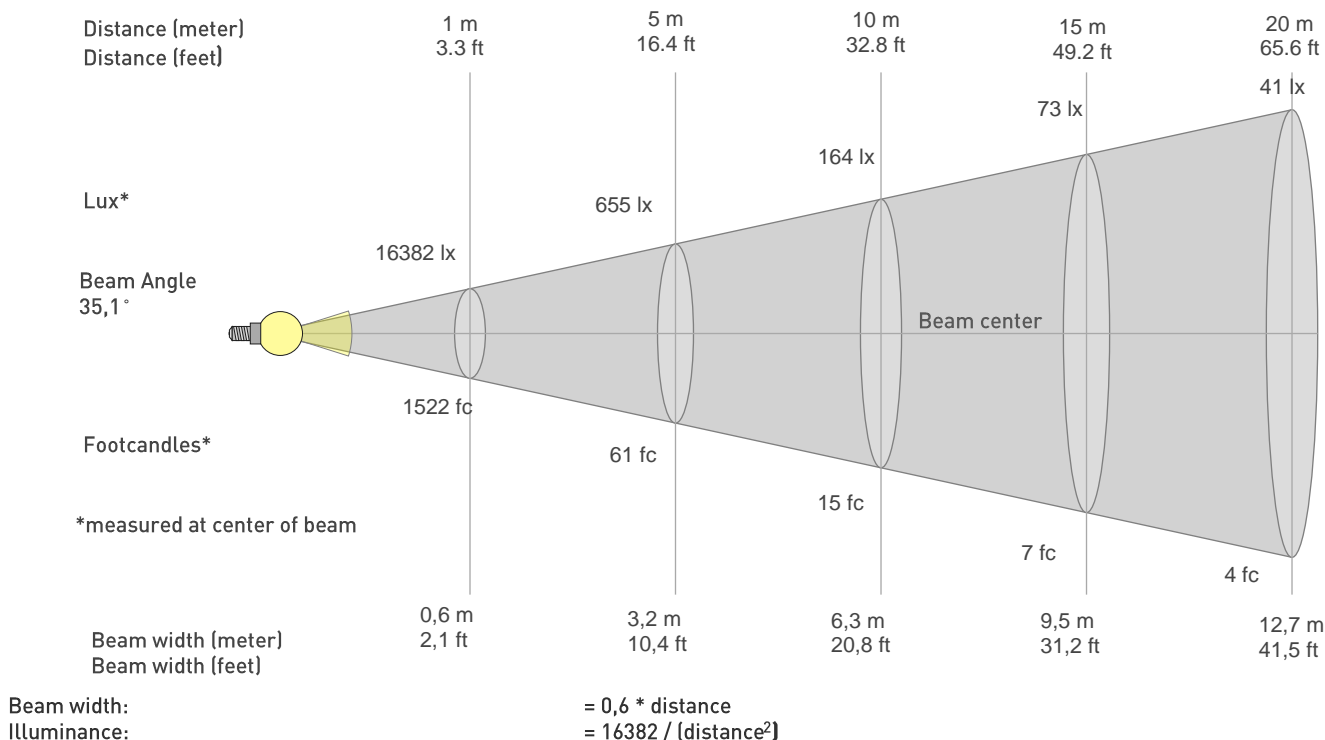
COLOR DISTORTION GRAPHICS



# Photometric Report

MAC Aura XIP Softlens – Wide

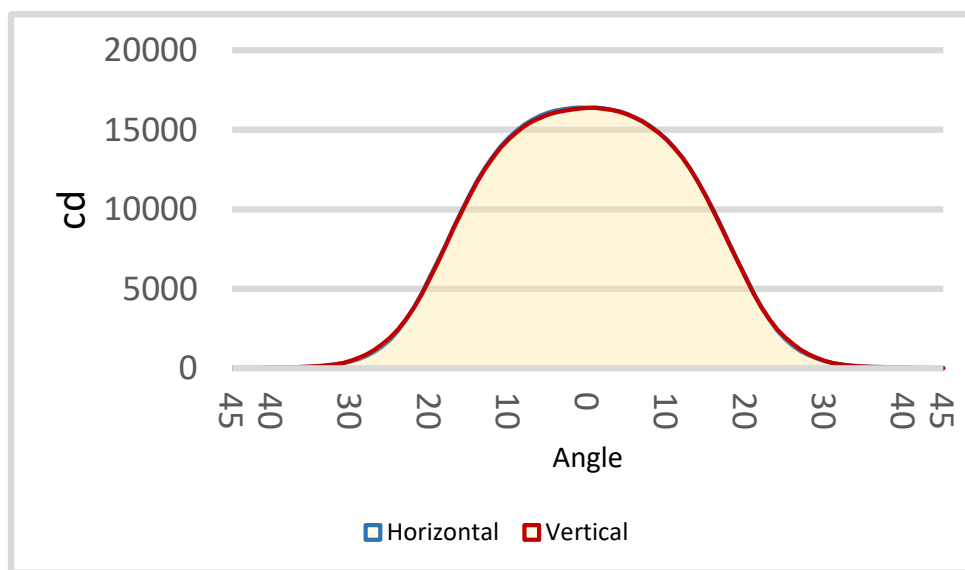
## BEAM DETAILS



distance in [m] for illuminance in [lux] distance in [ft] for illuminance in [fc]

## BEAM ILLUMINANCE FROM 1-20M

1m	2m	3m	4m	5m	6m	7m	8m	9m	10m	11m	12m	13m	14m	15m	16m	17m	18m	19m	20m
3,3ft	6,6ft	9,8ft	13,1ft	16,4ft	19,7ft	23ft	26,2ft	29,5ft	32,8ft	36,1ft	39,4ft	42,7ft	45,9ft	49,2ft	52,5ft	55,8ft	59,1ft	62,3ft	65,6ft
16382lx	4095lx	1820lx	1024lx	655lx	455lx	334lx	256lx	202lx	164lx	135lx	114lx	97lx	84lx	73lx	64lx	57lx	51lx	45lx	41lx
1521,9fc	380,5fc	169,1fc	95,1fc	60,9fc	42,3fc	31,1fc	23,8fc	18,8fc	15,2fc	12,6fc	10,6fc	9fc	7,8fc	6,8fc	5,9fc	5,3fc	4,7fc	4,2fc	3,8fc



BEAM ANGLE 50%	FIELD ANGLE 10%	CUTOFF ANGLE 3%
35,1°	51°	60,6°